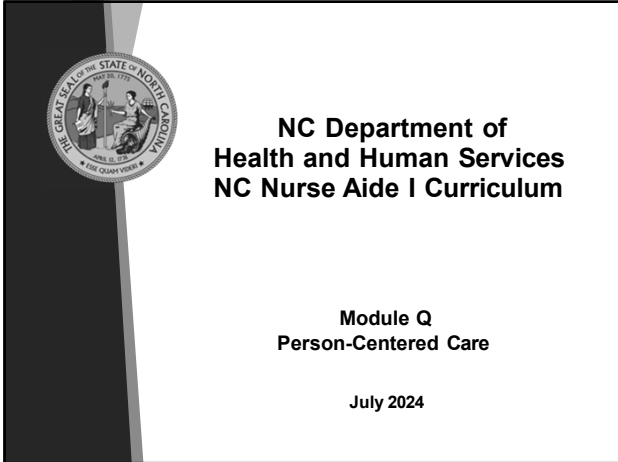
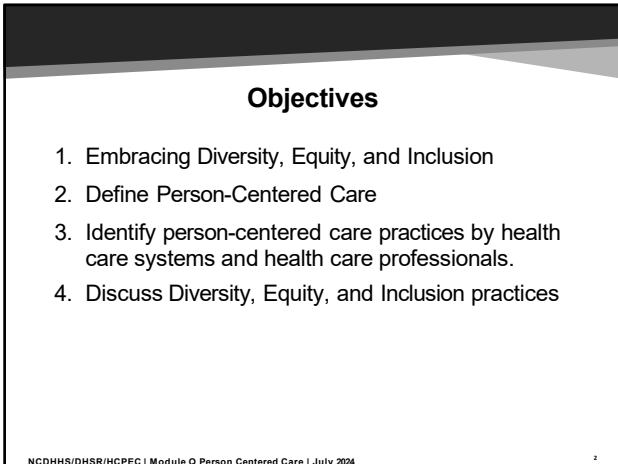


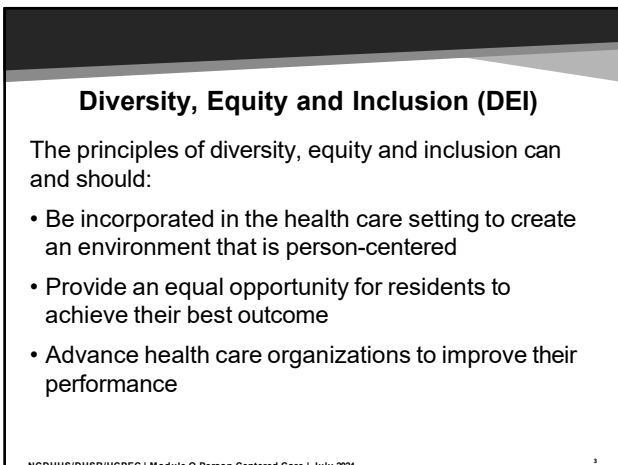
Title page



1



2



3

Module Q Handout 2

Person-Centered Care

Center for Medicare and Medicaid Services (CMS) defines Person-centered care as medical treatment:


- Directed and informed by resident's wishes, choices and personal values
- Delivering measurable outcomes based on resident feedback
- Involving interdisciplinary care
- Managing multiple medical conditions
- Developing trusting relationships between resident and care providers

NCDHHS/DHSR/HCPEIC | Module Q Person Centered Care | July 2024

4

Person-Centered Care

A method to provide care by recognizing the value of a person and self-worth



NCDHHS/DHSR/HCPEIC | Module Q Person Centered Care | July 2024

5

Person-Centered Care Goals

- To help the resident meet needs for attachment, inclusion, sense of well-being, and comfort
- To support an individual as a member of a community
- To honor the importance of keeping the resident at the center of the care planning and decision-making process

NCDHHS/DHSR/HCPEIC | Module Q Person Centered Care | July 2024

6

Module Q Handout 3

Person-Centered Care Goals


- To see the resident as a unique individual
- To respect skills and abilities
- To support the resident to be successful and maintain independence

NCDHHS/DHSR/HCPEIC | Module Q Person Centered Care | July 2024


7

Person-Centered Care in Practice

What does person-centered care mean for residents?



What does person-centered care mean for health care providers?





NCDHHS/DHSR/HCPEIC | Module Q Person Centered Care | July 2024

8

Person-Centered Care in Long-Term Care

Federal regulations from CMS for long-term care address and support person-centered care



Facilities are required to provide training that leads to person-centered care

NCDHHS/DHSR/HCPEIC | Module Q Person Centered Care | July 2024

9

Module Q Handout 4

Benefits of Person-Centered Care

Where a resident lives is the resident's home and can be made more homelike through person-centered care



10

Person-Centered Care Nurse Aide Role

- Communicate resident preferences and choices during shift change
- Develop caregiving behaviors when providing resident care and completing tasks
- Incorporate practices supporting diversity, equity, and inclusion
- Provide a home-like environment

11

Person-Centered Care - Relationships

Relationships allow for a better understanding of ourselves, our co-workers, and our residents




12

Module Q Handout 5

Person-Centered Care - Relationships


- Integrating diversity, equity, and inclusion principles into healthcare promotes collaboration, trust, and better health for outcomes
- An inclusive environment allows each resident to receive person-centered and equitable care



NCDHHS/DHSR/HCPEC | Module Q Person Centered Care | July 2024

13

Person-Centered Care



NCDHHS/DHSR/HCPEC | Module Q Person Centered Care | July 2024

14

The End

NCDHHS/DHSR/HCPEC | Module Q Person Centered Care | July 2024

15
